

# MONTHLY MEMBERSHIP PROGRESS REPORT

LOCATION PENNSYLVANIA

District 14 E

Results as of: 6/30/2021

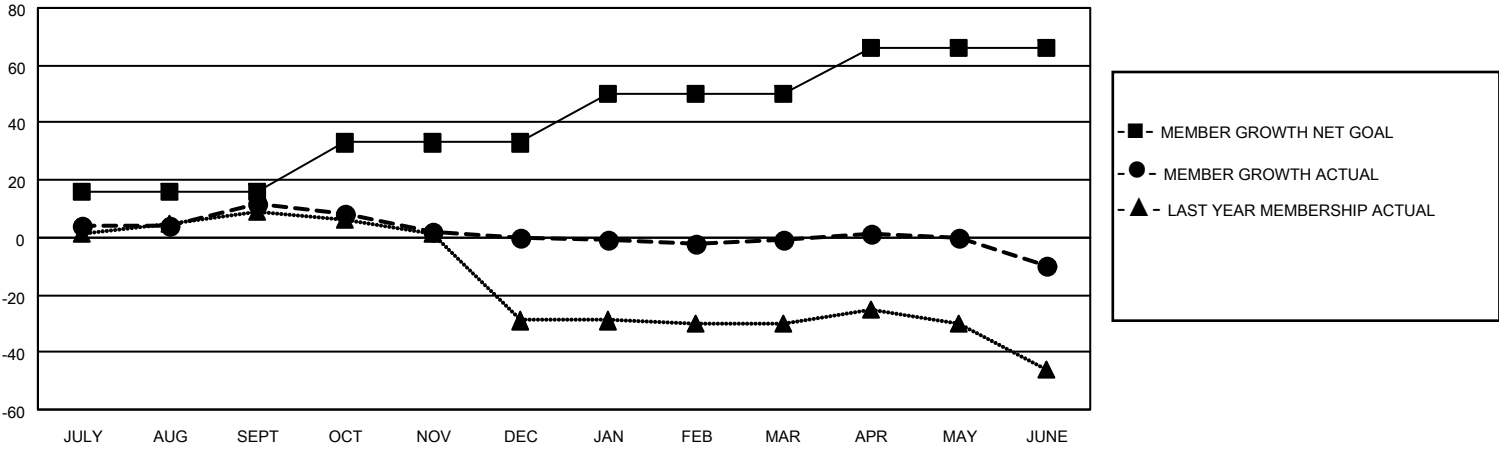
Clubs			
RESULTS FOR 2020-2021			
QUARTER	NEW CLUB GOAL	NEW CLUBS	DROPPED CLUBS
JULY/AUG/SEPT	0	0	0
OCT/NOV/DEC	1	0	0
JAN/FEB/MAR	0	0	0
APR/MAY/JUNE	0	0	0

Members			
RESULTS FOR 2020-2021			
QUARTER	MEMBER GROWTH NET GOAL	MEMBER GROWTH ACTUAL	DROPPED MEMBERS ACTUAL (including transfers)
JULY/AUG/SEPT	16	24	11
OCT/NOV/DEC	17	16	27
JAN/FEB/MAR	17	4	5
APR/MAY/JUNE	16	9	18

**GOALS AND ACTUAL NEW CLUBS CUMULATIVE**



**GOALS AND ACTUAL MEMBERS CUMULATIVE**



**DROPPED CLUBS: 0**

12 CLUBS OF 34 ADDED 1 OR MORE NEW MEMBERS

**GENDER DISTRIBUTION**

MALE 561 (71.10%)  
FEMALE 228 (28.90%)

**DROPPED MEMBERS**

DECEASED	8
CLUB CANCELLED	0
OTHER	53
<b>TOTAL</b>	<b>61</b>

[CLICK HERE FOR CUMULATIVE MEMBERSHIP DATA](#)

TOTAL FAMILY UNIT MEMBERS	191
FAMILY MEMBERS PAYING HALF DUES	100